
Colette Biscuit 1

Colette Biscuit 2

Lux
Typo.

Co

Biscuit 1 and 2 expand on the warm and friendly manner of the original Colette family to create a dynamic addition to the collection. Biscuit’s end brackets coupled with regular text settings lend itself to making signs, badges and motifs the mind sets to it. Paired with the original family, the Biscuit fonts add another dimension of consideration to Colette. All the fonts within the Biscuit family share the same spacing allowing them to be stacked to create additional display options as well as simple ‘flash’ animations.

Weights

Colette Biscuit 1 Fill Bold

Colette Biscuit 1 Line Bold

Colette Biscuit 1 Fill Regular

Colette Biscuit 1 Line Regular

Colette Biscuit 1 Fill Light

Colette Biscuit 1 Line Light

Colette Biscuit 2 Fill Bold

Colette Biscuit 2 Line Bold

Colette Biscuit 2 Fill Regular

Colette Biscuit 2 Line Regular

Colette Biscuit 2 Fill Light

Colette Biscuit 2 Line Light

Language Support

Afrikaans, Albanian, Baltic languages, Basque, Bosnian, Breton, Catalan, Corsican, Croatian, Czech, Danish, Dutch, Dutch b, English UK and US, English US and modern British, Esperanto, Estonian, Faroese, Finnish, French, Galician, German, Greenlandic, Hungarian, Icelandic, Indonesian, Irish, Irish Gaelic new orthography, Irish new orthography, Irish New orthography, Italian, Kurdish Unified Alphabet, Latin basic classical orthography, Latvian, Leonese, Lithuanian, Luxembourgish basic classical orthography, Malay, Malay Rumi script, Maltese, Manx, Māori, Nordic languages, Norwegian Bokmål and Nynorsk, Occitan, Polish, Portuguese, Portuguese European and Brazilian, Rhaeto-Romanic, Romanian, Sami, Scots, Scottish Gaelic, Serbian, Serbian when in the Latin script, Slovak, Slovene, Slovenian, Sorbian Lower and Upper, Spanish, Swahili, Swedish, Tagalog, Turkish, Walloon, Welsh

Features

Proportional Lining, Slash Zero, Fractions, Superscript / Superior, Subscript / Inferior, Numerator & Denominator, Stylistic Alternates

Formats

Standard licensing: OTF (CFF-flavored OpenType)
 Web font licensing: WOFF, EOT & SVG
 Dynamic embedding licensing: OTF (CFF-flavored OpenType)
 Other formats available upon request.

Design

Greg Lindy

Published

2020

The Aquarium of the Pacific

Colette Biscuit 1 Fill Bold, 68pt

Clifton's Brookdale Cafeteria

Colette Biscuit 1 Line Bold, 68pt

Olvera Street Muertos Artwalk

Colette Biscuit 1 Fill Regular, 68pt

LA Zoo Conservation Carousel

Colette Biscuit 1 Line Regular, 68pt

Museum of Jurassic Technology

Colette Biscuit 1 Fill Light, 68pt

NASA Space Shuttle Endeavor

Colette Biscuit 1 Line Light, 68pt

Echo Park Time Travel Mart

Colette Biscuit 2 Line Bold, 68pt

Miniature Garden of Whimsy

Colette Biscuit 2 Fill Bold, 68pt

Kidspace Children's Museum

Colette Biscuit 2 Line Regular, 68pt

Bob Baker Marionette Theater

Colette Biscuit 2 Fill Regular, 68pt

Faery Hunt Magical Adventure

Colette Biscuit 2 Line Light, 68pt

Travel Town Miniature Trains

Colette Biscuit 2 Fill Light, 68pt

HEIGHT REQUIREMENT: 36"



Cabazon Dinosaurs ↘

I-10W

"DINE FREE UNLESS DELIGHTED"

60/60 Colette Biscuit 1 Fill Bold



For Children Ages 5 & Up

TIKI ATTIRE FULLY ENCOURAGED

Million Pet Soirée

@

7pm

60/60 Colette Biscuit 1 Line Regular

A

B

C

EXTRA 6oz SLIME

Panchito the Piñata thanks YOU!

x

34.088471°, -118.317063°

y

60/60 Colette Biscuit 1 Fill Light

FOOD TRUCKS

PUPPET STAGE

0

Skipper Lakrisbåter

4

€

VINTAGE ARCADE SUPERSTORE

60/60 Colette Biscuit 1 Line Bold

E

T

Moon Jelly Touch Lab

BEVERLY PARK KIDDIELAND

%

Area of a Circle

=

$\pi \times r^2$

60/60 Colette Biscuit 1 Fill Regular

WHAC-A-MOLE

WIN A PRIZE!

The Carolwood Pacific Railroad

8

6

¢

· CONFETTI JELLO ·

60/60 Colette Biscuit 1 Line Light

PLACE IN WARM WATER TO HATCH

b

c

Dinosaur Eggs

\$9.99

SOLVE FOR X:

X

÷

4

=

8

60/60 Colette Biscuit 2 Fill Bold



The Hoppiest Place on Earth

BUNNY MUSEUM: 2605 LAKE AVE.

1

Ein

2

Tvær

3

Þrjár

60/60 Colette Biscuit 2 Line Regular

SUITABLE FOR GRADES

K

–

5

O

Z

Kažkur Už Vaivorykštės

SEYMOUR SHARK'S CRAFT CORNER

60/60 Colette Biscuit 2 Fill Light

I G #MOMONEYMOPUPPETS

Waltzing Tree ✕ Hair Eyes

ŚLIWKA NAŁĘCZOWSKA 190g f

60/60 Colette Biscuit 2 Line Bold

NaHCO₃ + CH₃COOH = BOOM

THE LITTLE FREE LIBRARY #0924

No 7 Join Arroyo Adventures!

60/60 Colette Biscuit 2 Fill Regular

GRIFFITH PARK PONY RIDES: \$5

If a=b & b=c → a=c

THE LA ZOO CHOO CHOO TRAINS

60/60 Colette Biscuit 2 Line Light

$2^2=2\times2=4$

$3^3=3\times3\times3=27$

$4^4=4\times4\times4\times4=256$

UTOPIAN FANTASY WITH A SIDE OF ENCHILADAS

LITE BEAM RAYGUN

AA BATTERIES INCLUDED

g

h

i

LIMEADE is Served Without Charge

38/45 Colette Biscuit 1 Fill Bold/Line Bold

Experience our 12 thrilling rides at Pacific Park®

LOCATED @ THE SANTA MONICA PIER

4

0

5

*

VIEWMASTERS BACK IN STOCK!

• \$20.00

The Pythagorean Theorem →

$A^2 + B^2$

=

C^2

38/45 Colette Biscuit 1 Fill Regular/Line Regular

POCKET-SIZED MYSTERIOUS ORACLE TOOL: \$10.50

$\frac{1}{4} = 25\%$

+

$\frac{1}{2} = 50\%$

+

$\frac{3}{4} = 75\%$

=

1

Matterhorn Bobsleds

Fastpass Return: 2pm-3pm

WHY DID THE CARROT CROSS WEST FIRST STREET?

38/45 Colette Biscuit 1 Fill Light/Line Light

OUR PUPPETS ARE SOCIAL AND SO ARE WE #

TK Brand™ Robot Toupées Only \$4.99 each!

Candy Dandy's Delicious Ice Cream Cup Castle

↳ THE GARDEN OF OZ: 3040 Ledgewood Drive

38/45 Colette Biscuit 2 Fill Bold/Line Bold

MERMAID → Sellő Môr-forwyn Sirēna

KIDDIE MATINEES AT THE NEW BEVERLY CINEMA

SKYWAY TO TOMORROWLAND DEPARTS @ 12pm

3 + 4 = 4 + 3 but 3 - 4 ≠ 4 - 3

38/45 Colette Biscuit 2 Fill Regular/Line Regular

MIRACLE MILE TOY HALL | 5464 WILSHIRE BLVD

Lizard Øgle Ještěrka Eöla Şopârlă

Kid's Treasure Tray 5 9 ç Free Candy!

TINY TOT TUESDAYS @ EL CAPITAN THEATRE

38/45 Colette Biscuit 2 Fill Light/Line Light

● REMAIN SEATED PLEASE! ● ● ¡PERMANECER SENTADOS POR FAVOR! ●

If $a \leq b$ then $a + c \leq b + c$ and $a - c \leq b - c$

LAGUNA DE SAN GABRIEL PLAYGROUND AKA "DINOSAUR PARK" EST. 1965

Bottle Rockets: 1 Empty Bottle $\frac{3}{4}$ cup Vinegar 1 Tbsp Baking Soda

WHAT HAPPENS IN THE LA BREA TAR PITS... STAYS IN THE LA BREA TAR PITS

Evil Robot Memory Eraser \$12.99 Not for use on Androids or Cyborgs

25/30 Colette Biscuit 1 Fill Bold/Line Bold

Special Screening of "I Am Big Bird" @ The Velaslavasay Panorama Tonight

GROW YOUR OWN CRYSTALS $1\frac{1}{2}$ CUP H_2O $1\frac{1}{4}$ CUP $MgSO_4$ SMALL BOWL

M R - E D The Talking Horse was born in a red barn in Chatsworth

HANS CHRISTIAN ANDERSON MUSEUM 1680 MISSION DRIVE, SOLVANG, CA

The Distributive Property States $A \times B + A \times C = A \times B + C$

MÆLKEVEJEN VED TIVOLI HØJDE: MIN 130cm PRIS: 3 BILLETTER Á 30 KR

25/30 Colette Biscuit 1 Fill Regular/Line Regular

THE QUADRATIC FORMULA $\rightarrow x = \frac{-b \pm \sqrt{b^2 - 4ac}}{2a}$

Galco's Soda Pop Stop: 5702 York Boulevard Over 500+ Flavors of Soda!

MAY 1992-JUNE 2011 25 MISSIONS 4,671 ORBITS O V - 1 0 5

PBJ.LA's Elvis Sandwich: Peanut Butter Banana Jam PBJ.LA B@con™

WATCH OUR PENGUINS 24 HOURS A DAY IN OUR ABOVE WATER PENGUIN CAM!

Orso/a Medvěd Bære Bär Lācis Turēti Bjørn Niedźwiedź

25/30 Colette Biscuit 1 Fill Light/Line Light

SING ALONG WITH FRIENDLY SHARKS, SEA TURTLES & PLAYFUL DOLPHINS!

4 Štyri 5 Päť 6 Šest 7 Sedem 8 Osem 9 Devät

ECHO PARK LAKE PEDAL BOAT RENTAL \$11 PER ADULT \$6 PER CHILD

« Clifton's isn't "Disney-esque," Disneyland is "Cliftons-esque!" »

ONE MAN SHOW: \$350 25-35 MINUTES 1 PERFORMER 11 PUPPETS

A is for Apple B is for Banana C is for Castle D is for Dragon

25/30 Colette Biscuit 2 Fill Bold/Line Bold

Steiff | Schlüsselanhänger Fynn Teddybär Größe: 12cm Preis: 17,90€

H O P ! BUNNYHENGGE | 1333A AVOCADO AVENUE | NEWPORT BEACH

Inkie's Wave Jumper @ the Pier No Height Requirement with Chaperone

DISCOVERY CUBE SUPERHERO CAMP → JUNE 22-JUNE 26 GRADES K-1st

Czerwony Pomarańczowy Żółty Zielony Błękitny Purpurowy

CHILDREN'S BOOK WORLD: 10580½ W. PICO BLVD STORY TIME: 2-3:30pm

25/30 Colette Biscuit 2 Fill Regular/Line Regular

MACACO/A APAKÖTTUR PĒRTIĶIS BEŽDŽIONĒ MAŁPA MAIMUĀ

Puppet "adoptions" make the most charming gifts for family and friends!

1/6 ≈ .16667 1/3 ≈ .3334 2/3 ≈ .6667 5/6 ≈ .83334

Walt Disney's Barn in Griffith Park Open Every 3rd Sunday 11am-3pm

VISIT THE GNOME VILLAGE @ CAL STATE DOMINGUEZ HILLS € £ ₩ ¥

Bort Brothers® Certified Professional Time Machine Component: \$9.99 each

25/30 Colette Biscuit 2 Fill Light/Line Light

In 1991, Hollywood resident Gail Cottman purchased a small plot of land directly beneath her Hollywood Hills abode. Originally intended to house a patch of roses, Cottman's flower garden soon grew into something much more spectacular, and magical, than she could have ever imagined. To build her garden, Cottman's contractor, Manuel Rodriguez, placed her roses in a bed of concrete. Noticing the dullness of the cement, Rodriguez decorated the concrete with tiles and beads to brighten it up. When Cottman noticed this new flowerbed design, it reminded her of one of her favorite movies, "The Wizard of Oz," whose concept of "everyone is their own wizard" had inspired her throughout her life. She used this inspiration to take her project to the next level, devoting her entire garden's decor to "Munchkinland,"

18/21 Colette Biscuit 1 Fill Bold

Weaving through trees and shrubs, the yellow-tiled path twisting through the Garden of Oz forms the "Yellow Brick Road," which directs the rare visitor through a landscape of thousands of shining tiles. Featuring a crystal ball, the "Wall of Toys," and a mailbox where you can send a letter directly to Oz, this folk art project features hundreds of plants, tiled staircases, and towering mosaics. There are multiple thrones in the Garden of Oz, each with a unique backstory. The garden features musical thrones dedicated to Elvis Presley and Duke Ellington and peacemaking thrones dedicated to inspirational figures such as Rosa Parks and the Dalai Lama. Also featured in Munchkinland is the Dorothy Throne, "A Throne of Your Own," and a throne dedicated to Musako Morioka, Cottman's

18/21 Colette Biscuit 1 Line Regular

Since 1991, the Garden of Oz has evolved into one of the most unique spaces in Los Angeles, so much so that it was designated Los Angeles Historic Cultural Monument, #996 in June 2011. It is only open to the public from 10am to 12pm on Thursdays, but Cottman has allegedly given keys to all of the neighborhood's children so that they have a direct pathway to a magical future. Adults wishing to see the garden at any time can easily view it from the streetside, but it is worth the trip to be allowed inside. As it is located on a narrow residential street in the Hollywood Hills, parking can be difficult to find so it is a good idea to arrive early. While taking photos is not allowed inside the garden, the experience will be hard to forget. While in the area, take the opportunity to explore Beachwood Canyon,

18/21 Colette Biscuit 1 Fill Light

In 1991, Hollywood resident Gail Cottman purchased a small plot of land directly beneath her Hollywood Hills abode. Originally intended to house a patch of roses, Cottman's flower garden soon grew into something much more spectacular, and magical, than she could have ever imagined. To build her garden, Cottman's contractor, Manuel Rodriguez, placed her roses in a bed of concrete. Noticing the dullness of the cement, Rodriguez decorated the concrete with tiles and beads to brighten it up. When Cottman noticed this new flowerbed design, it reminded her of one of her favorite movies, "The Wizard of Oz," whose concept of "everyone is their own wizard" had inspired her throughout her life. She used this inspiration to take her project to the next level, devoting her entire garden's decor to "Munchkinland,"

18/21 Colette Biscuit 1 Line Bold

Weaving through trees and shrubs, the yellow-tiled path twisting through the Garden of Oz forms the "Yellow Brick Road," which directs the rare visitor through a landscape of thousands of shining tiles. Featuring a crystal ball, the "Wall of Toys," and a mailbox where you can send a letter directly to Oz, this folk art project features hundreds of plants, tiled staircases, and towering mosaics. There are multiple thrones in the Garden of Oz, each with a unique backstory. The garden features musical thrones dedicated to Elvis Presley and Duke Ellington and peacemaking thrones dedicated to inspirational figures such as Rosa Parks and the Dalai Lama. Also featured in Munchkinland is the Dorothy Throne, "A Throne of Your Own," and a throne dedicated to Musako Morioka, Cottman's

18/21 Colette Biscuit 1 Fill Regular

Since 1991, the Garden of Oz has evolved into one of the most unique spaces in Los Angeles, so much so that it was designated Los Angeles Historic Cultural Monument, #996 in June 2011. It is only open to the public from 10am to 12pm on Thursdays, but Cottman has allegedly given keys to all of the neighborhood's children so that they have a direct pathway to a magical future. Adults wishing to see the garden at any time can easily view it from the streetside, but it is worth the trip to be allowed inside. As it is located on a narrow residential street in the Hollywood Hills, parking can be difficult to find so it is a good idea to arrive early. While taking photos is not allowed inside the garden, the experience will be hard to forget. While in the area, take the opportunity to explore Beachwood Canyon,

18/21 Colette Biscuit 1 Light Light

In 1991, Hollywood resident Gail Cottman purchased a small plot of land directly beneath her Hollywood Hills abode. Originally intended to house a patch of roses, Cottman's flower garden soon grew into something much more spectacular, and magical, than she could have ever imagined. To build her garden, Cottman's contractor, Manuel Rodriguez, placed her roses in a bed of concrete. Noticing the dullness of the cement, Rodriguez decorated the concrete with tiles and beads to brighten it up. When Cottman noticed this new flowerbed design, it reminded her of one of her favorite movies, "The Wizard of Oz," whose concept of "everyone is their own wizard" had inspired her throughout her life. She used this inspiration to take her project to the next level, devoting her entire garden's decor to "Munchkinland."

18/21 Colette Biscuit 2 Line Bold

Weaving through trees and shrubs, the yellow-tiled path twisting through the Garden of Oz forms the "Yellow Brick Road," which directs the rare visitor through a landscape of thousands of shining tiles. Featuring a crystal ball, the "Wall of Toys," and a mailbox where you can send a letter directly to Oz, this folk art project features hundreds of plants, tiled staircases, and towering mosaics. There are multiple thrones in the Garden of Oz, each with a unique backstory. The garden features musical thrones dedicated to Elvis Presley and Duke Ellington and peacemaking thrones dedicated to inspirational figures such as Rosa Parks and the Dalai Lama. Also featured in Munchkinland is the Dorothy Throne, "A Throne of Your Own," and a throne dedicated to Musako Morioka, Cottman's

18/21 Colette Biscuit 2 Fill Regular

Since 1991, the Garden of Oz has evolved into one of the most unique spaces in Los Angeles, so much so that it was designated Los Angeles Historic Cultural Monument, #996 in June 2011. It is only open to the public from 10am to 12pm on Thursdays, but Cottman has allegedly given keys to all of the neighborhood's children so that they have a direct pathway to a magical future. Adults wishing to see the garden at any time can easily view it from the streetside, but it is worth the trip to be allowed inside. As it is located on a narrow residential street in the Hollywood Hills, parking can be difficult to find so it is a good idea to arrive early. While taking photos is not allowed inside the garden, the experience will be hard to forget. While in the area, take the opportunity to explore Beachwood Canyon,

18/21 Colette Biscuit 2 Line Light

In 1991, Hollywood resident Gail Cottman purchased a small plot of land directly beneath her Hollywood Hills abode. Originally intended to house a patch of roses, Cottman's flower garden soon grew into something much more spectacular, and magical, than she could have ever imagined. To build her garden, Cottman's contractor, Manuel Rodriguez, placed her roses in a bed of concrete. Noticing the dullness of the cement, Rodriguez decorated the concrete with tiles and beads to brighten it up. When Cottman noticed this new flowerbed design, it reminded her of one of her favorite movies, "The Wizard of Oz," whose concept of "everyone is their own wizard" had inspired her throughout her life. She used this inspiration to take her project to the next level, devoting her entire garden's decor to "Munchkinland,"

18/21 Colette Biscuit 2 Fill Bold

Weaving through trees and shrubs, the yellow-tiled path twisting through the Garden of Oz forms the "Yellow Brick Road," which directs the rare visitor through a landscape of thousands of shining tiles. Featuring a crystal ball, the "Wall of Toys," and a mailbox where you can send a letter directly to Oz, this folk art project features hundreds of plants, tiled staircases, and towering mosaics. There are multiple thrones in the Garden of Oz, each with a unique backstory. The garden features musical thrones dedicated to Elvis Presley and Duke Ellington and peacemaking thrones dedicated to inspirational figures such as Rosa Parks and the Dalai Lama. Also featured in Munchkinland is the Dorothy Throne, "A Throne of Your Own," and a throne dedicated to Musako Morioka, Cottman's

18/21 Colette Biscuit 2 Line Regular

Since 1991, the Garden of Oz has evolved into one of the most unique spaces in Los Angeles, so much so that it was designated Los Angeles Historic Cultural Monument, #996 in June 2011. It is only open to the public from 10am to 12pm on Thursdays, but Cottman has allegedly given keys to all of the neighborhood's children so that they have a direct pathway to a magical future. Adults wishing to see the garden at any time can easily view it from the streetside, but it is worth the trip to be allowed inside. As it is located on a narrow residential street in the Hollywood Hills, parking can be difficult to find so it is a good idea to arrive early. While taking photos is not allowed inside the garden, the experience will be hard to forget. While in the area, take the opportunity to explore Beachwood Canyon,

18/21 Colette Biscuit 2 Fill Light

ABCDEFGHIJKLMNOPQRSTUVWXYZ

abcdefghijklmnopqrstuvwxyz

0123456789,!?@€\$ç£%#&/'”



A	B	C	D	E	F	G	H	I	J
q	r	s	t	u	v	w	x	y	z
0	1	2	3	4	5	6	7	8	9

Colette Biscuit 1 Fill Bold

ABCDEFGHIJKLMNOPQRSTUVWXYZ

abcdefghijklmnopqrstuvwxyz

0123456789,!?@€\$ç£%#&/'”



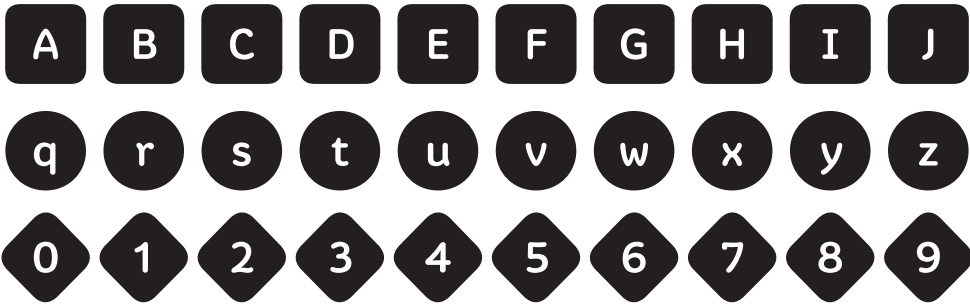
A	B	C	D	E	F	G	H	I	J
q	r	s	t	u	v	w	x	y	z
0	1	2	3	4	5	6	7	8	9

Colette Biscuit 1 Line Bold

ABCDEFGHIJKLMNOPQRSTUVWXYZ

abcdefghijklmnopqrstuvwxyz

0123456789,!?@€\$ç£%#&/'"

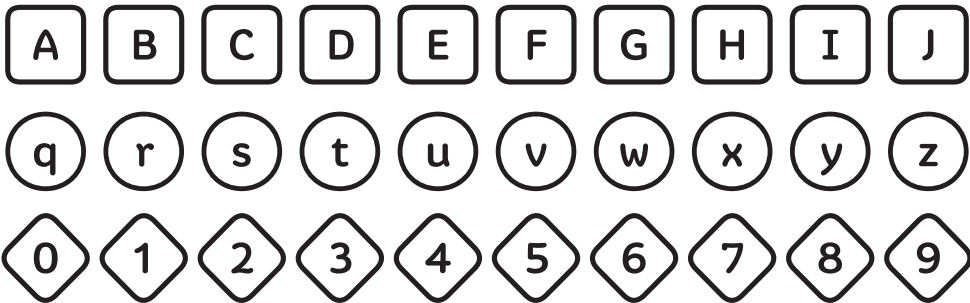


Colette Biscuit 1 Fill Regular

ABCDEFGHIJKLMNOPQRSTUVWXYZ

abcdefghijklmnopqrstuvwxyz

0123456789,!?@€\$ç£%#&/'"

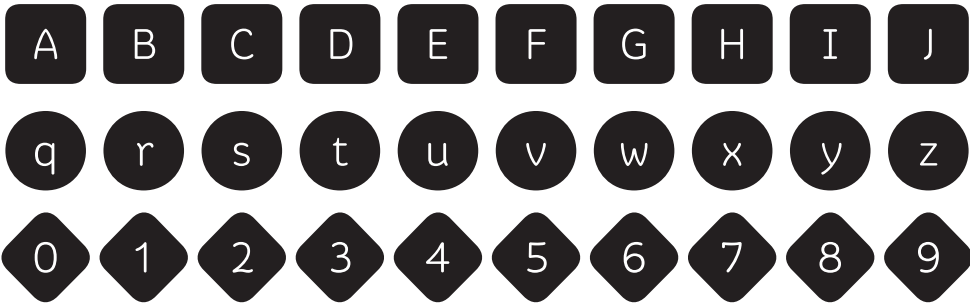


Colette Biscuit 1 Line Regular

ABCDEFGHIJKLMNOPQRSTUVWXYZ

abcdefghijklmnopqrstuvwxyz

0123456789, !?@€\$ç£%#&/'"

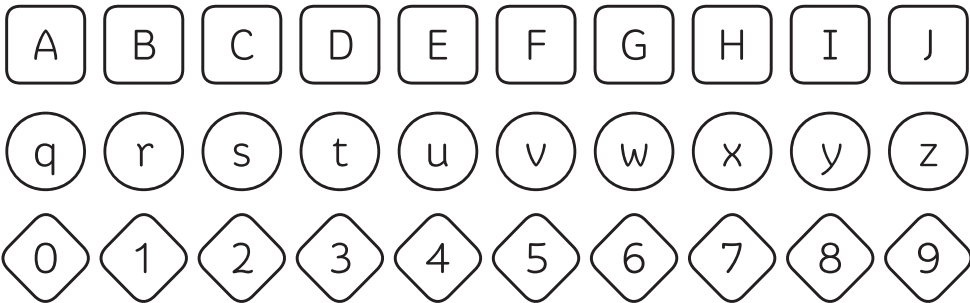
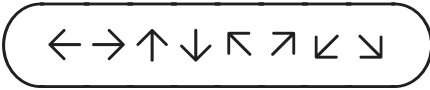


Colette Biscuit 1 Fill Light

ABCDEFGHIJKLMNOPQRSTUVWXYZ

abcdefghijklmnopqrstuvwxyz

0123456789, !?@€\$ç£%#&/'"



Colette Biscuit 1 Line Light

ABCDEFGHIJKLMNOPQRSTUVWXYZ

abcdefghijklmnopqrstuvwxyz

0123456789, !?@€\$ç£%#&/'"

⋮ ⋮⋮ ⋮⋮⋮ ⬅➡⬆⬇↶↷↸↙

A B C D E F G H I J
q r s t u v w x y z
0 1 2 3 4 5 6 7 8 9

Colette Biscuit 2 Fill Bold

ABCDEFGHIJKLMNOPQRSTUVWXYZ

abcdefghijklmnopqrstuvwxyz

0123456789, !?@€\$ç£%#&/'"

⋮ ⋮⋮ ⋮⋮⋮ ⬅➡⬆⬇↶↷↸↙

A B C D E F G H I J
q r s t u v w x y z
0 1 2 3 4 5 6 7 8 9

Colette Biscuit 2 Line Bold

ABCDEFGHIJKLMNOPQRSTUVWXYZ

abcdefghijklmnopqrstuvwxyz

0123456789,!?@€\$ç£%#&/'"

⋮ ⋮⋮ ⋮⋮⋮ ⬅➡⬆⬇↖↗↘↙

A B C D E F G H I J
q r s t u v w x y z
0 1 2 3 4 5 6 7 8 9

Colette Biscuit 2 Fill Regular

ABCDEFGHIJKLMNOPQRSTUVWXYZ

abcdefghijklmnopqrstuvwxyz

0123456789,!?@€\$ç£%#&/'"

⋮ ⋮⋮ ⋮⋮⋮ ⬅➡⬆⬇↖↗↘↙

A B C D E F G H I J
q r s t u v w x y z
0 1 2 3 4 5 6 7 8 9

Colette Biscuit 2 Line Regular

ABCDEFGHIJKLMNOPQRSTUVWXYZ
 abcdefghijklmnopqrstuvwxyz
 0123456789, !?@€\$ç£%#&/'"

B B B ←→↑↓↖↗↘↙

A B C D E F G H I J
 q r s t u v w x y z
 0 1 2 3 4 5 6 7 8 9

Colette Biscuit 2 Fill Light

ABCDEFGHIJKLMNOPQRSTUVWXYZ
 abcdefghijklmnopqrstuvwxyz
 0123456789, !?@€\$ç£%#&/'"

B B B ←→↑↓↖↗↘↙

A B C D E F G H I J
 q r s t u v w x y z
 0 1 2 3 4 5 6 7 8 9

Colette Biscuit 2 Line Light

Colette Biscuit 1

Accented Uppercase

À Á Â Ã Ä Å Æ Ç È É Ê Ë Ì Í Î Ï Ñ Ò Ó Ô Õ Ö Ø Ù Ú Û Ü Ý Þ ß à á â ã ä å æ ç è é ê ë ì í î ï ñ ò ó ô õ ö ø ù ú û ü ý þ ß

Accented Lowercase

á â ã ä å æ ç è é ê ë ì í î ï ñ ò ó ô õ ö ø ù ú û ü ý þ ß

Standard Punctuation
& Symbols

! " # \$ % & ' () * + , - . : ; < = > ? @ [\] ^ _ ` { | } ~ ¡ ¢ £ ¤ ¥ ¦ § ¨ © ª « ¬ ® ¯ ° ± ² ³ ´ µ ¶ · ¸ ¹ º » ¼ ½ ¾

Figures

0 1 2 3 4 5 6 7 8 9 € \$ £ ¥ ¤ % & # < + = - x ÷ > ≈ ≠ ≤ ≥

Superior / Numerator
Denominator / Inferior

H^{0123456789(+ -=)} H_{0123456789(+ -=)} H_{0123456789(+ -=)}

Alternate Characters

A	B	C	D	E	F	G	H	I	J	K	L	M	N	O	P
Q	R	S	T	U	V	W	X	Y	Z						
a	b	c	d	e	f	g	h	i	j	k	l	m	n	o	p
q	r	s	t	u	v	w	x	y	z						
0	1	2	3	4	5	6	7	8	9	\$	£	€	¥	¢	f
%	#	<	+	=	-	x	÷	>	≈	≠	≤	≥			
↑	↓	←	→	↖	↗	↙	↘	@	&	Nº					
A	B	C	D	E	F	G	H	I	J	K	L	M	N	O	P
Q	R	S	T	U	V	W	X	Y	Z						
a	b	c	d	e	f	g	h	i	j	k	l	m	n	o	p
q	r	s	t	u	v	w	x	y	z						
0	1	2	3	4	5	6	7	8	9	\$	£	€	¥	¢	f
%	#	<	+	=	-	x	÷	>	≈	≠	≤	≥			
↑	↓	←	→	↖	↗	↙	↘	@	&	Nº					
A	B	C	D	E	F	G	H	I	J	K	L	M	N	O	P
Q	R	S	T	U	V	W	X	Y	Z						
a	b	c	d	e	f	g	h	i	j	k	l	m	n	o	p
q	r	s	t	u	v	w	x	y	z						
0	1	2	3	4	5	6	7	8	9	\$	£	€	¥	¢	f
%	#	<	+	=	-	x	÷	>	≈	≠	≤	≥			
↑	↓	←	→	↖	↗	↙	↘	@	&	Nº					

Colette Biscuit 1

Deactivated

.....
All Caps

Fresh Churros: \$3.99

.....
Fractions

3/4 and 1 1/2 567/3435

.....
Numerator/Denominator

0123456789

.....
Superiors/ Inferiors

B3 H2o

.....
Contextual Alternates

(A) [B] < C >
(Colette Biscuit)
(Biscuit) [One Two]

Activated

.....
All Caps

FRESH CHURROS: \$3.99

.....
Fractions

¾ and 1½ 567/3435

.....
Numerator/Denominator

0123456789 / 0123456789

.....
Superior/Inferior

B³ H₂o

.....
Contextual Alternates

(A) [B] < C >
(Colette Biscuit)
(Biscuit) [One Two]

Colette Biscuit 2

Deactivated

.....
All Caps

Fresh Churros: \$3.99

.....
Fractions

3/4 and 1 1/2 567/3435

.....
Numerator/Denominator

0123456789

.....
Superiors/ Inferiors

B³ H₂O

.....
Contextual Alternates

{ A } { B } { C }
{ Colette Biscuit }
{ Biscuit } { One Two }

Activated

.....
All Caps

FRESH CHURROS: \$3.99

.....
Fractions

¾ and 1½ 567/3435

.....
Numerator/Denominator

0123456789 / 0123456789

.....
Superior/Inferior

B³ H₂O

.....
Contextual Alternates

A B C
Colette Biscuit
Biscuit One Two