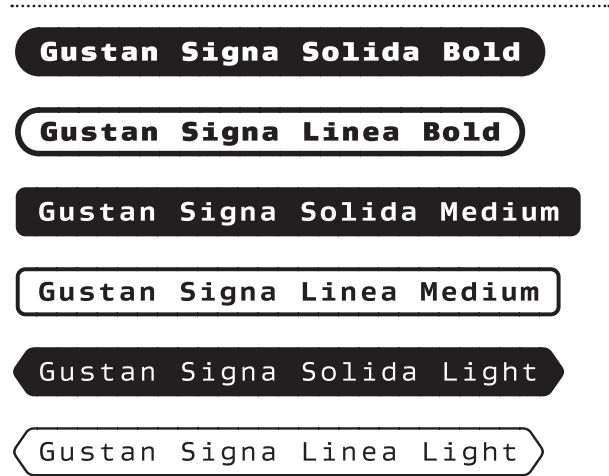


Lux
Typo.

Gu

Gustan Signa is a dynamic display addition to the Gustan Collection. Signa’s end brackets coupled with regular text settings lend itself to making signs, badges and motifs the mind sets to it. Paired with the original family, the Signa fonts add another dimension of consideration to Gustan. All the fonts within the Signa family share the same spacing allowing them to be stacked to create additional display options as well as simple ‘flash’ animations.

Weights



Language Support

Afrikaans, Albanian, Baltic languages, Basque, Bosnian, Breton, Catalan, Corsican, Croatian, Czech, Danish, Dutch, Dutch b, English UK and US, English US and modern British, Esperanto, Estonian, Faroese, Finnish, French, Galician, German, Greenlandic, Hungarian, Icelandic, Indonesian, Irish, Irish Gaelic new orthography, Irish new orthography, Irish New orthography, Italian, Kurdish Unified Alphabet, Latin basic classical orthography, Latvian, Leonese, Lithuanian, Luxembourgish basic classical orthography, Malay, Malay Rumi script, Maltese, Manx, Māori, Nordic languages, Norwegian Bokmål and Nynorsk, Occitan, Polish, Portuguese, Portuguese European and Brazilian, Rhaeto-Romanic, Romanian, Sami, Scots, Scottish Gaelic, Serbian, Serbian when in the Latin script, Slovak, Slovene, Slovenian, Sorbian Lower and Upper, Spanish, Swahili, Swedish, Tagalog, Turkish, Walloon, Welsh

Features

Ligatures, Capital Forms, Proportional Lining Figures, Slash Zero, Numerator & Denominator, Stylistic Contextual Alternates.

Formats

Standard licensing: OTF (CFF-flavored OpenType) Web font licensing: WOFF, EOT & SVG Dynamic embedding licensing: OTF (CFF-flavored OpenType) Other formats available upon request.

Design	Published
Greg Lindy	2017

© 2017 Lux Typo. All rights reserved. Lux Typo® and Gustan® are registered trademarks of Lux Typographic + Design.

$a^2 + b^2 = c^2$ \neq $x = 5 + 2y - 12$

Gustan Signa Solida Bold, 48pt

48°51'11.09"N 2°228.68'E

Gustan Signa Linea Bold, 48pt

Emergency Broadcast Network

Gustan Signa Solida Bold, 48pt

Saint-Denis → (M) (8) (9)

Gustan Signa Linea Medium, 48pt

NORTHERN LINE → Camden Town

Gustan Signa Solida Medium, 48pt

EXPRESS: 10 ITEMS OR FEWER

Gustan Signa Linea Medium, 48pt

HSO_4^- Hydrogen Sulfate

Gustan Signa Solida Light, 48pt

→ SAN FRANCISCO 356 I5/N

Gustan Signa Linea Light, 48pt

↓ NASDAQ 6,337.51 -27.02

Gustan Signa Solida Light, 48pt

U 1 Umlandstraße →

PLEASE REMAIN SEATED WITH

↗ Cockfosters 15 ≥ 3x

60/60 Gustan Signa Solida Bold

U Straßenbahn Berlin ↗

101/N ↖ 60° / 40°C ●

BREAKING NEWS UPDATE!

60/60 Gustan Signa Linea Medium

52.5333°N • 13.1667°E

SYSTEM TEST PLEASE STAND BY

↘ \$59.99 ● H₂ CO₃

60/60 Gustan Signa Solida Light

↗ Terminal 2 # 5 №

H₂SO₄ π ≈ 3.1415926 *

→ DOW J 22,019.78 + 3.54

60/60 Gustan Signa Linea Bold

Connecting Lines 1 5

MLB: TIGERS 2, YANKEES 0

Flight 756: Now Boarding

60/60 Gustan Signa Solida Medium

BERLIN: POP. 3,670,622

5 A → Leytonstone 2

= \$35 + TIP 20%

60/60 Gustan Signa Linea Light

Nollendorfpplatz → Connections:

2

3

4

Forecast:

High: 100°F

Low: 90°F

Potsdamer Platz →

← Alexanderplatz

LEICESTER CITY vs AFC BOURNEMOUTH: 1,1

38/45 Gustan Signa Solida Bold/Linea Bold

T14: Hägerstensåsen

12:35

12:55

1:05

Polyatomic Cations

NH₄ +

H₃O +

Hg₂²⁺

GLOBAL MARKETS: Stocks slip as Wall St. eases

Solve:

$x^5 + 2y = 3x - 17$

6

≥

3

x

+

1

38/45 Gustan Signa Solida Medium/Linea Medium

NFL: AARON RODGERS WANTS TO BE A PACKER AT 40

Quadratic Formula

$x = \frac{-b \pm \sqrt{b^2 - 4ac}}{2a}$

SALE!

All Shirts: \$15.99

+

Extra 50%

Latitude: 51.508°N

Longitude: 0.12475°W

38/45 Gustan Signa Solida Light/Linea Light

ABUSE OF POWER COMES AS NO SURPRISE • PROTECT ME FROM WHAT I WANT

LAX → SFO 500 FLIGHTS PER DAY

№ 10 DOWNING STREET, LONDON

North Circular Road →

A 4 0 6

M1 London → Manchester

DOW J 21,618.46 ↑ 43.73

AAPL 151.24 ↑ 1.15

SBUX 57.92 ↓ 0.29

Atlanta Braves Break LA Dodgers' 9-Game Winning Streak → 5,3

Area of a Circle

$A = \pi r^2$

Circumference of a Circle

$C = \pi \times d = 2\pi \times r$

25/30 Gustan Signa Solida Bold/Linea Bold

ANIONS FROM ORGANIC ACIDS



ACETATE



FORMATE

US STOCKS: DOW HITS RECORD HIGH AS AMAZON, APPLE PULL DOWN S&P 500

Today's Forecast:

Santa Monica

High 75°F

Low 66°F

SUNNY

• CALIFORNIA TODAY: What Would A Very L.A. Olympics Look Like? •

Typographic Units

12 points

1 pica



72 points

6 picas

1 inch

WEIGHT CONVERSION

STONE → LB → KG

1 STONE

=

14 LB

=

6.35029KG

25/30 Gustan Signa Solida Medium/Linea Medium

SINE:

OPPOSITE ÷ HYPOTENUSE

COSINE:

ADJACENT ÷ HYPOTENUSE

Norman Lear, LL Cool J, & Gloria Estefan, among 2017 Kennedy Center

1 Pint

32 Tbsp

16 Pony

8 Jack

4 Gill

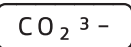
2 Cup

1/2 Quart

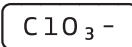
Arsenal/Everton: 3,1 Chelsea/Sunderland: 5,1 Watford/Manchester City: 0,5

OXOANIONS

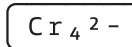
CARBONATE



CHLORATE



CHROMATE



London → Coventry

M1 • J2 → J17 • M45

123.3 km

52.32464°N 1.14069°W

25/30 Gustan Signa Solida Light/Linea Light

ABCDEFGHIJKLMNOPQRSTUVWXYZ

abcdefghijklmnopqrstuvwxyz

0123456789, !? @ €\$¢£% # & / ' "

◯ ◻ ◼ ◀ ▶ ← → ↑ ↓ ↖ ↗ ↘ ↙

A B C D E F G H I J

q r s t u v w x y z

0 1 2 3 4 5 6 7 8 9

Gustan Signa Solida Bold

ABCDEFGHIJKLMNOPQRSTUVWXYZ

abcdefghijklmnopqrstuvwxyz

0123456789, !? @ €\$¢£% # & / ' "

◯ ◻ ◼ ◀ ▶ ← → ↑ ↓ ↖ ↗ ↘ ↙

A B C D E F G H I J

q r s t u v w x y z

0 1 2 3 4 5 6 7 8 9

Gustan Signa Linea Bold

ABCDEFGHIJKLMNOPQRSTUVWXYZ

abcdefghijklmnopqrstuvwxyz

0123456789 , ! ? @ € \$ £ % # & / ' "

⏪ ⏩ ⏴ ⏵ ⏶ ⏷ ⏸ ⏹

A B C D E F G H I J

q r s t u v w x y z

0 1 2 3 4 5 6 7 8 9

Gustan Signa Solida Medium

ABCDEFGHIJKLMNOPQRSTUVWXYZ

abcdefghijklmnopqrstuvwxyz

0123456789 , ! ? @ € \$ £ % # & / ' "

⏪ ⏩ ⏴ ⏵ ⏶ ⏷ ⏸ ⏹

A B C D E F G H I J

q r s t u v w x y z

0 1 2 3 4 5 6 7 8 9

Gustan Signa Linea Medium

ABCDEFGHIJKLMNOPQRSTUVWXYZ

abcdefghijklmnopqrstuvwxyz

0123456789 , ! ? @ € \$ £ % # & / ' "

▯ ▯ ▯ ← → ↑ ↓ ↖ ↗ ↘ ↙

A B C D E F G H I J

q r s t u v w x y z

0 1 2 3 4 5 6 7 8 9

Gustan Signa Solida Light

ABCDEFGHIJKLMNOPQRSTUVWXYZ

abcdefghijklmnopqrstuvwxyz

0123456789 , ! ? @ € \$ £ % # & / ' "

○ □ ◁ ← → ↑ ↓ ↖ ↗ ↘ ↙

A B C D E F G H I J

q r s t u v w x y z

0 1 2 3 4 5 6 7 8 9

Gustan Signa Linea Light

.....
Accented Uppercase

Á Â Ã Ä Å Æ Ç Ć Ĉ Ċ Đ É Ê Ë Ì Í Î Ï Ĳ ĳ Ĺ Ľ Ļ Ñ Ñ Ñ Ñ

Ó Ô Õ Ö Ø Ù Ú Û Ü Ý Þ ß à á â ã ä å æ ç ċ ĉ ċ đ é ê ë ì í î ï ĳ ĵ Ĺ ĺ ľ ñ ñ ñ ñ

.....
Accented Lowercase

á â ã ä å æ ç ċ ĉ ċ đ é ê ë ì í î ï ĳ ĵ Ĺ ĺ ľ ñ ñ ñ ñ

ó ô õ ö ø ù ú û ü ý þ ß à á â ã ä å æ ç ċ ĉ ċ đ é ê ë ì í î ï ĳ ĵ Ĺ ĺ ľ ñ ñ ñ ñ

.....
Figures

0 1 2 3 4 5 6 7 8 9 \$ £ € ¥ ¢ ¢ % ‰ # < + = - × ÷ > ≈ ≠ ≤ ≥

.....
Numerator / Denominator
Superior / Inferior

H 0 1 2 3 4 5 6 7 8 9 / H 0 1 2 3 4 5 6 7 8 9 H 0 1 2 3 4 5 6 7 8 9 H 0 1 2 3 4 5 6 7 8 9

.....
Alternate Characters

A B C D E F G H I J K L M N O P
 Q R S T U V W X Y Z
 a b c d e f g h i j k l m n o p
 q r s t u v w x y z
 0 1 2 3 4 5 6 7 8 9 \$ £ € ¥ ¢ ¢
 % ‰ # < + = - × ÷ > ≈ ≠ ≤ ≥
 ↑ ↓ ← → ↖ ↗ ↘ ↙ @ & №
 A B C D E F G H I J K L M N O P
 Q R S T U V W X Y Z
 a b c d e f g h i j k l m n o p
 q r s t u v w x y z
 0 1 2 3 4 5 6 7 8 9 \$ £ € ¥ ¢ ¢
 % ‰ # < + = - × ÷ > ≈ ≠ ≤ ≥
 ↑ ↓ ← → ↖ ↗ ↘ ↙ @ & №
 A B C D E F G H I J K L M N O P
 Q R S T U V W X Y Z
 a b c d e f g h i j k l m n o p
 q r s t u v w x y z
 0 1 2 3 4 5 6 7 8 9 \$ £ € ¥ ¢ ¢
 % ‰ # < + = - × ÷ > ≈ ≠ ≤ ≥
 ↑ ↓ ← → ↖ ↗ ↘ ↙ @ & №

Gustan Signa

Deactivated

.....
All Caps

Metro Cards: \$3.99

.....
Fractions

3/4 and 1 1/2 567/3435

.....
Numerator/Denominator

0123456789

.....
Superiors/Inferiors

B³ H₂O

.....
Contextual Alternates

(A) [B] < C >
(Gustan Signa)
(Gustan) [Signa]

Activated

.....
All Caps

METRO CARDS: \$3.99

.....
Fractions

3/4 and 1 1/2 567/3435

.....
Numerator/Denominator

0 1 2 3 4 5 6 7 8 9 / 0 1 2 3 4 5 6 7 8 9

.....
Superior/Inferior

B³ H₂O

.....
Contextual Alternates

(A) (B) (C)
Gustan Signa
Gustan **Signa**